

With plastic or sheet steel housing and dual scale in bar/psi, »pressure line« Series

Low-priced series of standard pressure gauges available in all popular diameters with the most frequently requested measuring ranges.

Version: Bourdon-tube pressure gauge
 Applications: For gaseous or liquid media which do not corrode copper alloy, do not have high viscosity and do not crystallise
 Measuring element and movement: Copper alloy
 Front glass: Plastic
 Medium temperature: -20 °C to +60 °C
 Ambient temperature: -20 °C to +60 °C

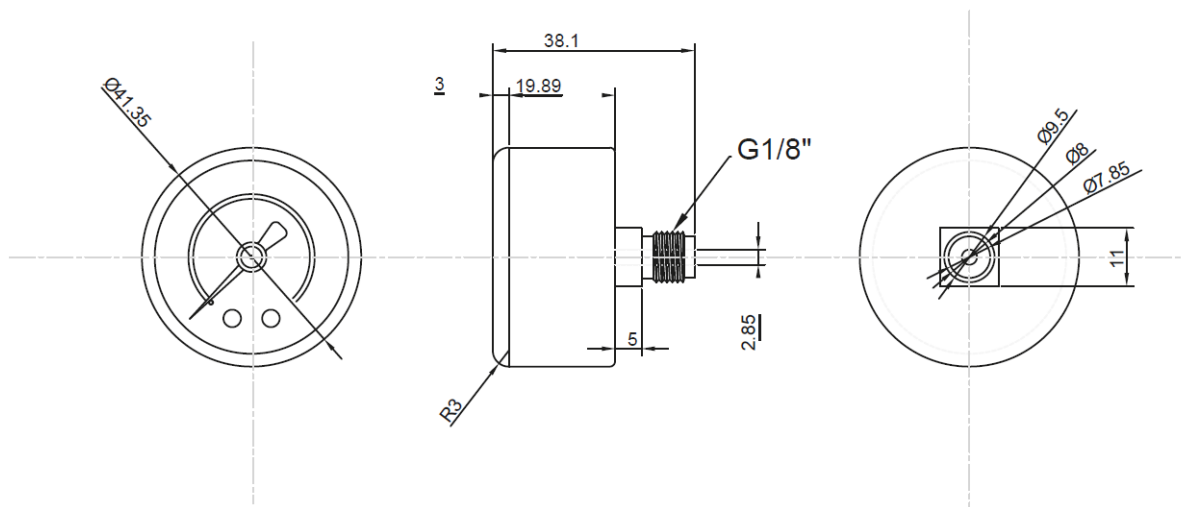


206-DE

Standard pressure gauge, connection on rear

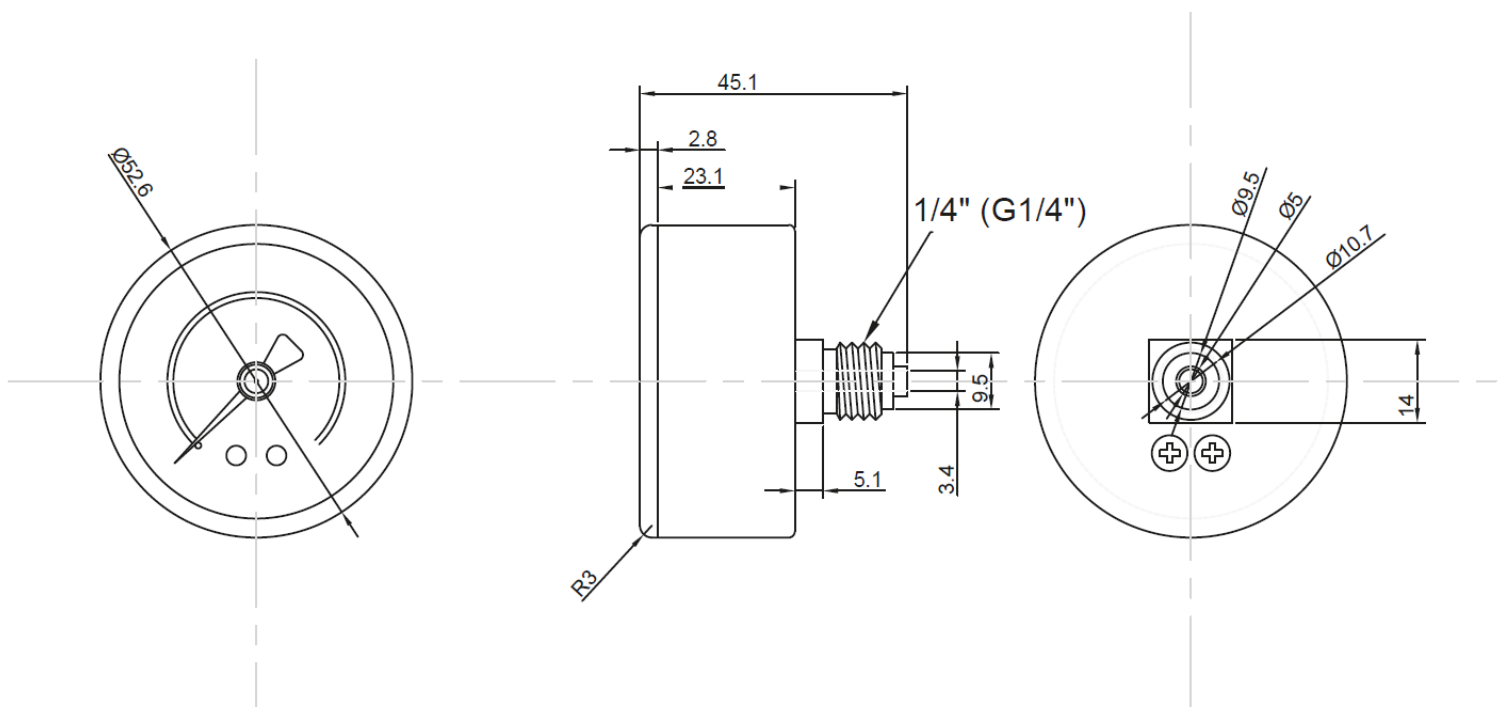
Art. No.	Type No.	Measuring range bar		Accuracy class	Housing	Diameter mm	Connection
115018	110.41-KDE	-1 / 0	for vacuum	2.5	Plastic	40	G 1/8
115019	110.42-KDE	0 – 1.6	-	2.5	Plastic	40	G 1/8
115020	110.43-KDE	0 – 2.5	-	2.5	Plastic	40	G 1/8
115021	110.44-KDE	0 – 4.0	-	2.5	Plastic	40	G 1/8
115022	110.45-KDE	0 – 6.0	-	2.5	Plastic	40	G 1/8
115023	110.46-KDE	0 – 10.0	-	2.5	Plastic	40	G 1/8
115024	110.47-KDE	0 – 16.0	-	2.5	Plastic	40	G 1/8

Dimensions in mm:



Standard pressure gauge, connection on rear

Art. No.	Type No.	Measuring range bar		Accuracy class	Housing	Diameter mm	Connection
115490	200-KDE	-1 / 0	for vacuum	2.5	Plastic	50	G 1/4
115491	201-KDE	0 – 1.0	-	2.5	Plastic	50	G 1/4
115492	202-KDE	0 – 1.6	-	2.5	Plastic	50	G 1/4
115493	203-KDE	0 – 2.5	-	2.5	Plastic	50	G 1/4
115494	204-KDE	0 – 4.0	-	2.5	Plastic	50	G 1/4
115495	205-KDE	0 – 6.0	-	2.5	Plastic	50	G 1/4
115496	206-KDE	0 – 10.0	-	2.5	Plastic	50	G 1/4
115497	207-KDE	0 – 16.0	-	2.5	Plastic	50	G 1/4

Dimensions in mm:


Standard pressure gauge, connection on rear

Art. No.	Type No.	Measuring range bar		Accuracy class	Housing	Diameter mm	Connection
115498	211/1-DE	-1 / 0	for vacuum	1.6	Sheet steel	63	G 1/4
115499	212-DE	0 – 1.0	-	1.6	Sheet steel	63	G 1/4
115500	213-DE	0 – 1.6	-	1.6	Sheet steel	63	G 1/4
115501	214-DE	0 – 2.5	-	1.6	Sheet steel	63	G 1/4
115502	215-DE	0 – 4.0	-	1.6	Sheet steel	63	G 1/4
115503	216-DE	0 – 6.0	-	1.6	Sheet steel	63	G 1/4
115504	217-DE	0 – 10.0	-	1.6	Sheet steel	63	G 1/4
115505	218-DE	0 – 16.0	-	1.6	Sheet steel	63	G 1/4

Dimensions in mm:
